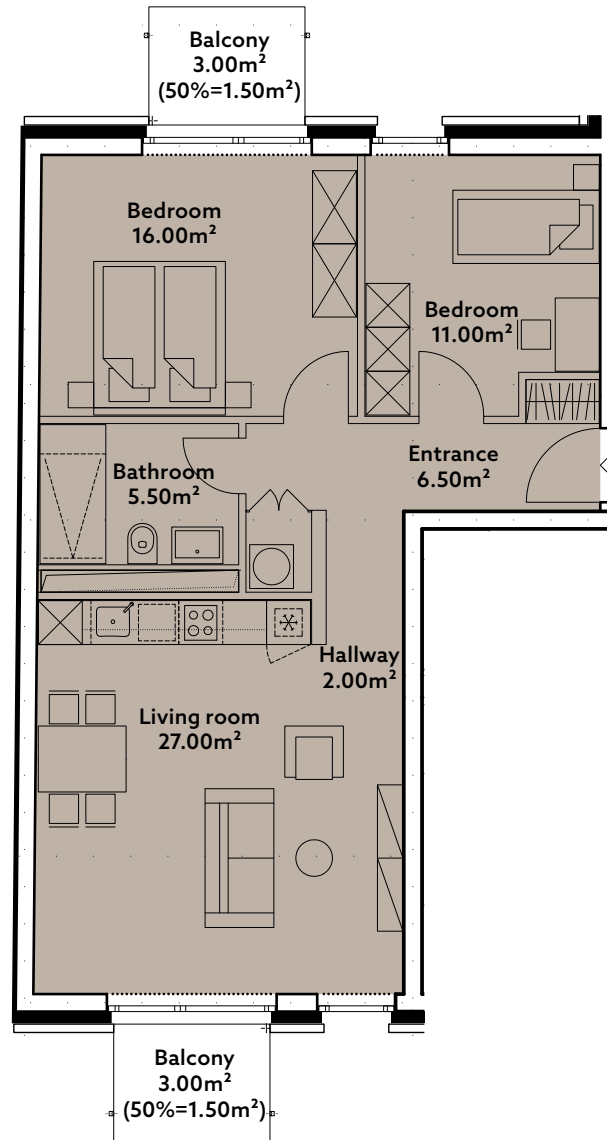
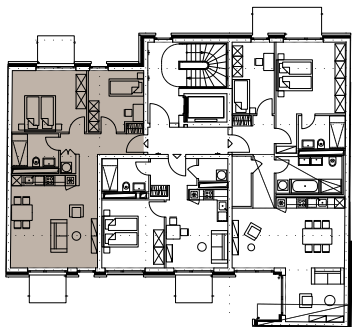


FLOOR PLANS

Yves-01

1st Floor, 2-bedroom

● 1-bedroom ● 2-bedroom



Internal Area:	69.00m ²
External Area:	3.00m ²
Total Area:	72.00m ²

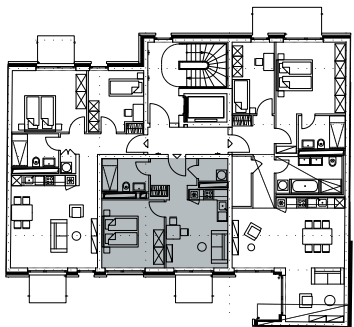
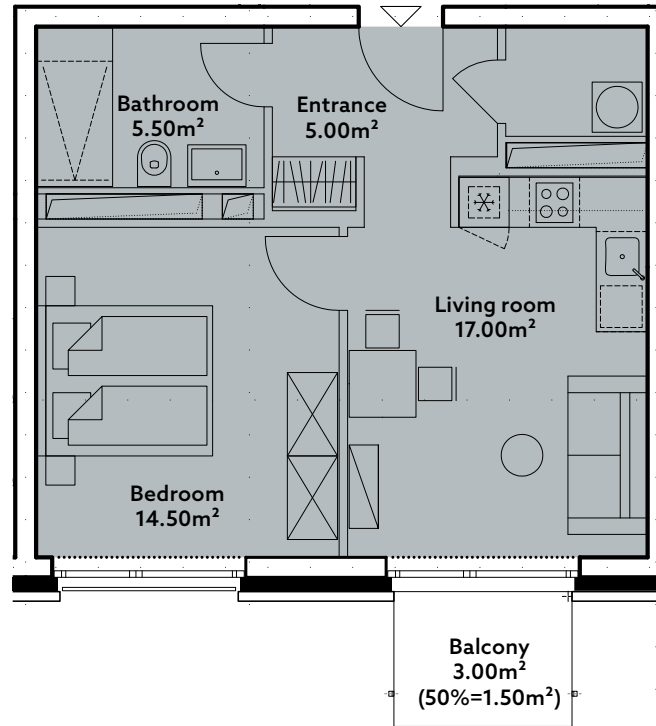


FLOOR PLANS

Yves-02

1st Floor, 1-bedroom

● 1-bedroom ● 2-bedroom



Internal Area:	44.00m ²
External Area:	1.5m ²
Total Area:	45.50m ²

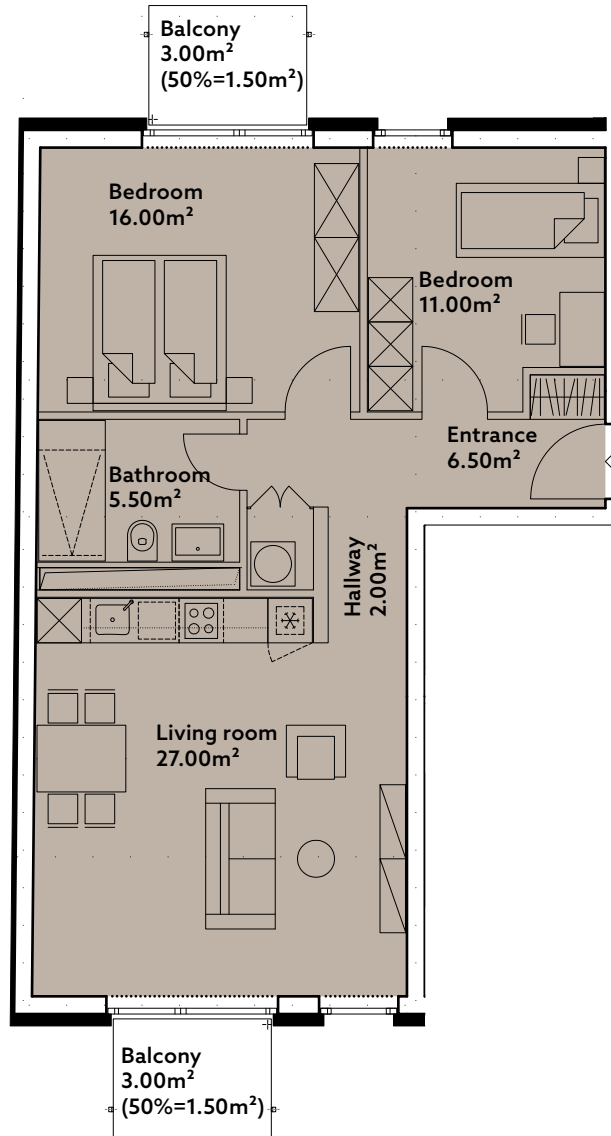
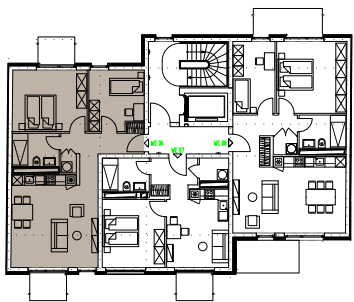


FLOOR PLANS

Yves-03

2nd Floor, 2-bedroom

● 1-bedroom ● 2-bedroom



Internal Area:	69.00m ²
External Area:	3.00m ²
Total Area:	72.00m ²

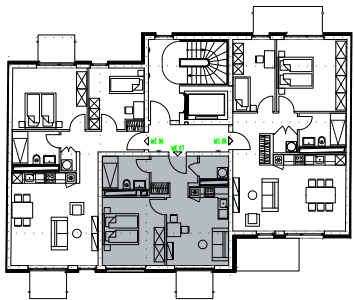
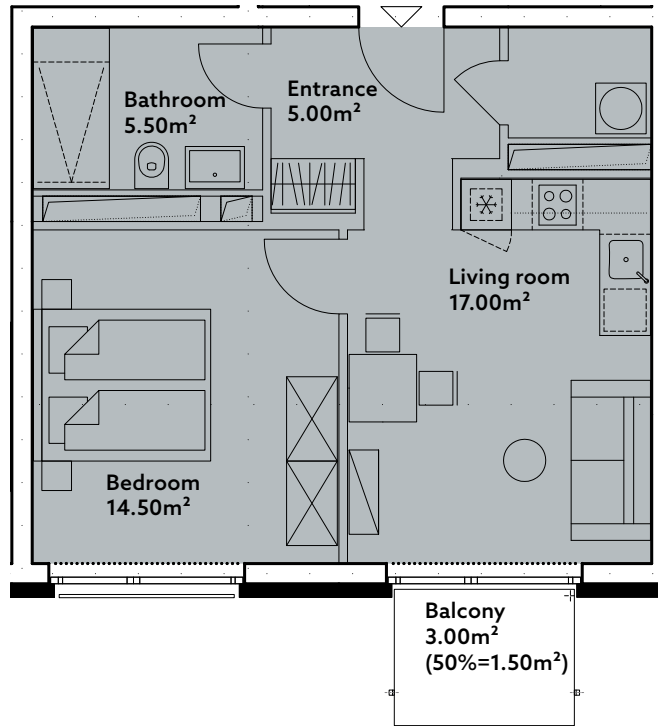


FLOOR PLANS

Yves-04

2nd Floor, 1-bedroom

● 1-bedroom ● 2-bedroom



Internal Area:	44.00m ²
External Area:	1.5m ²
Total Area:	45.5m ²

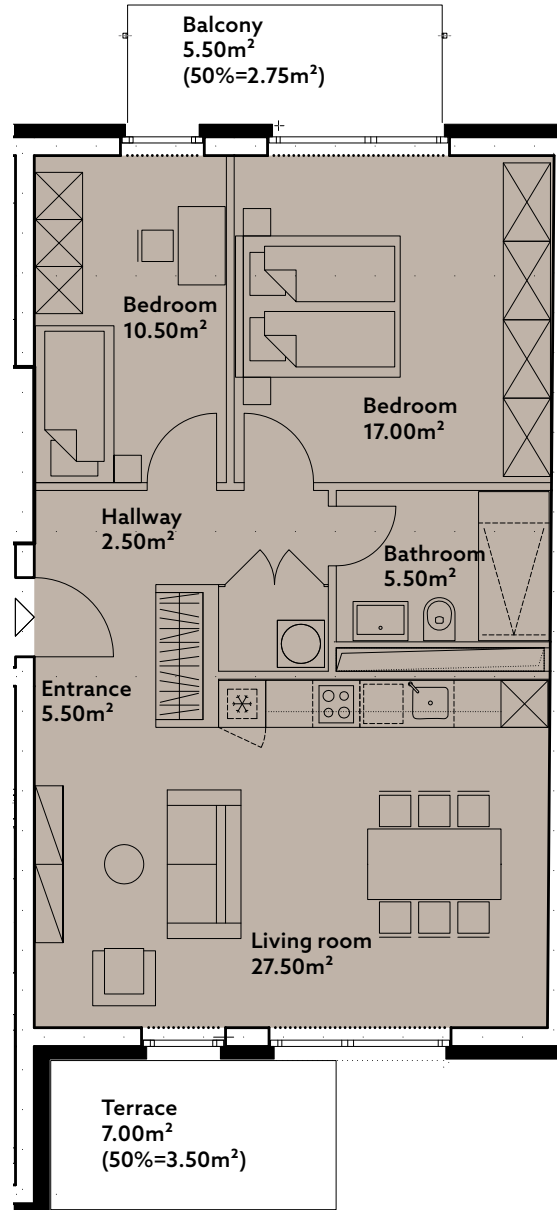
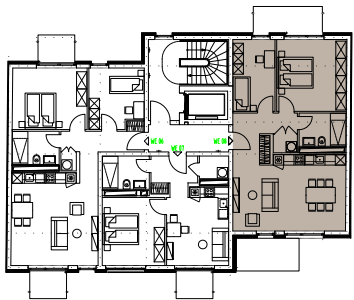


FLOOR PLANS

Yves-05

2nd floor, 2-bedroom

● 1-bedroom ● 2-bedroom



Internal Area:	70.00m ²
External Area:	6.25m ²
Total Area:	76.25m ²

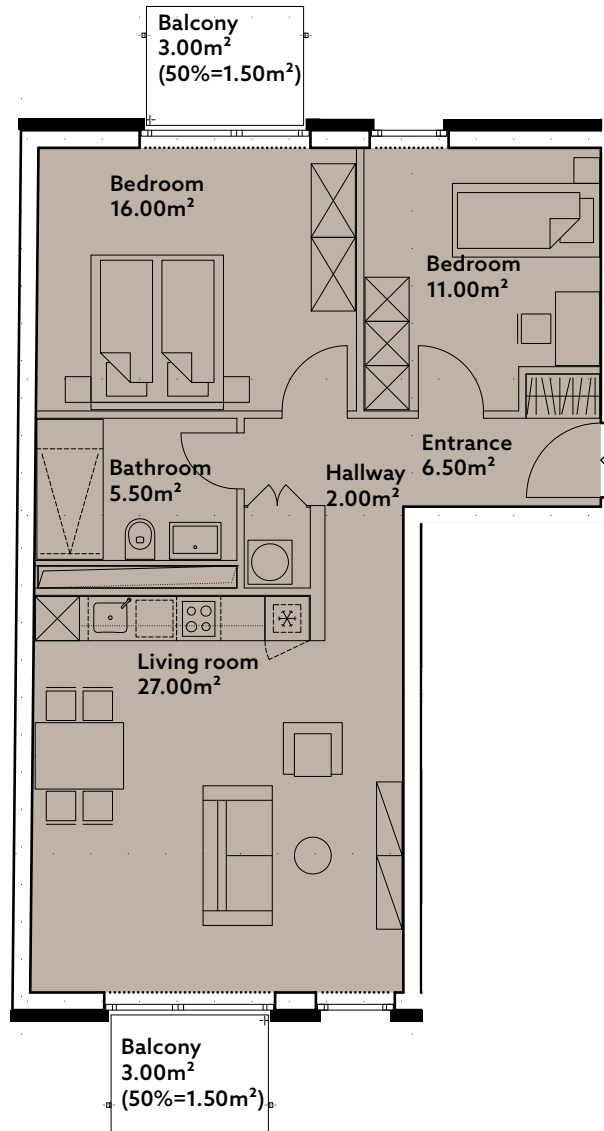
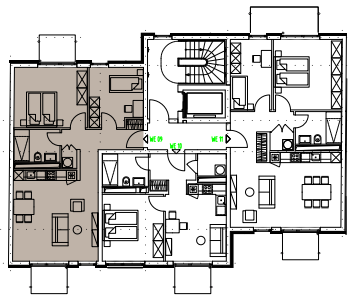


FLOOR PLANS

Yves-06

3rd floor, 2-bedroom

● 1-bedroom ● 2-bedroom



Internal Area:	69.00m ²
External Area:	3.00m ²
Total Area:	72.00m ²

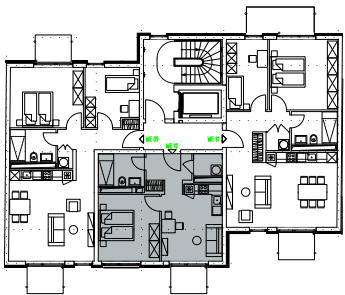
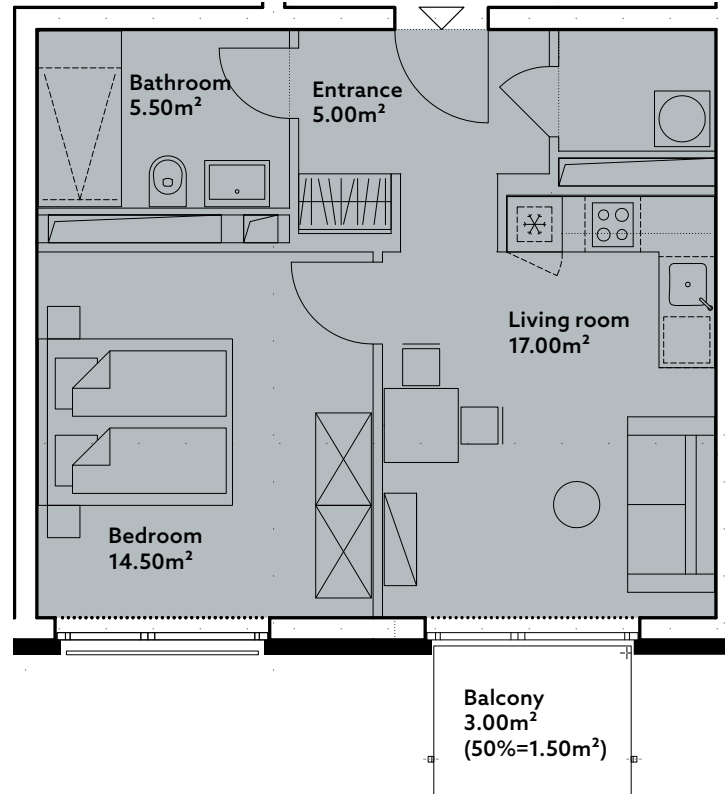


FLOOR PLANS

Yves-07

3rd floor, 1-bedroom

● 1-bedroom ● 2-bedroom



Internal Area:	44.00m ²
External Area:	1.5m ²
Total Area:	45.50m ²

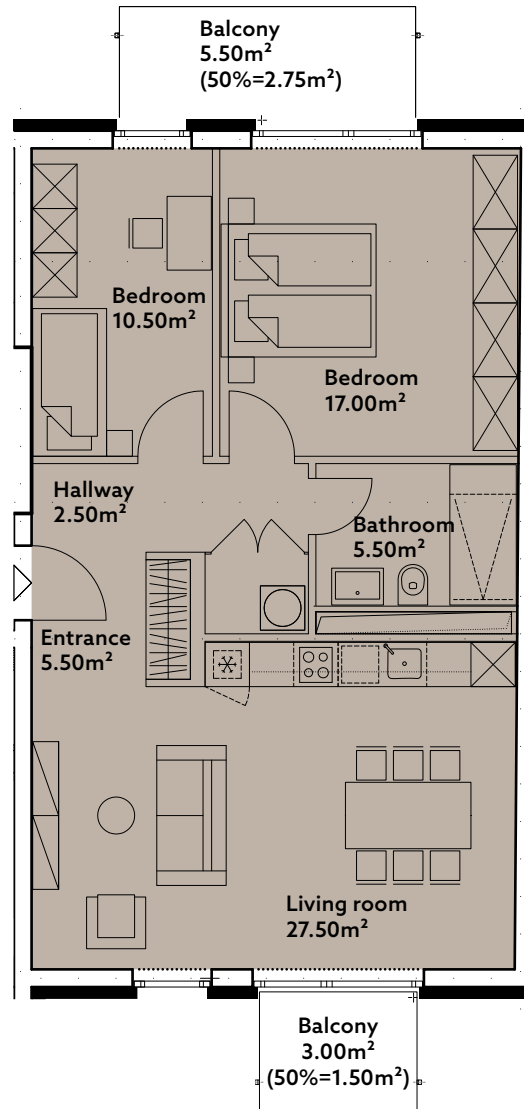
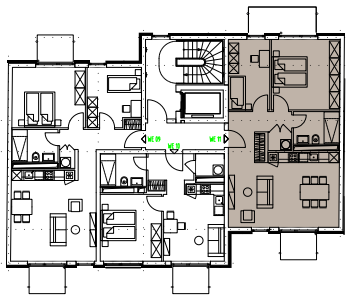


FLOOR PLANS

Yves-08

3rd floor, 2-bedroom

● 1-bedroom ● 2-bedroom



Internal Area:	70.00m ²
External Area:	4.25m ²
Total Area:	74.25m²

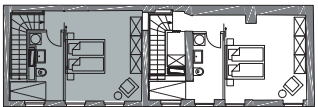
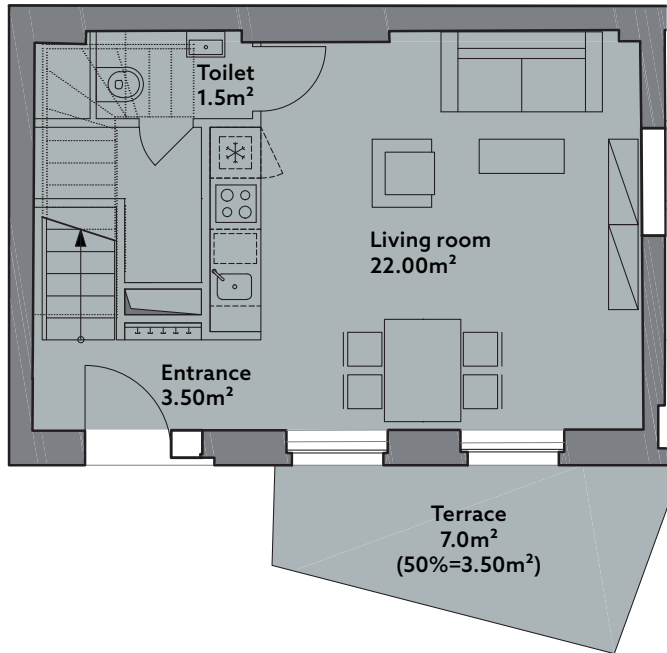
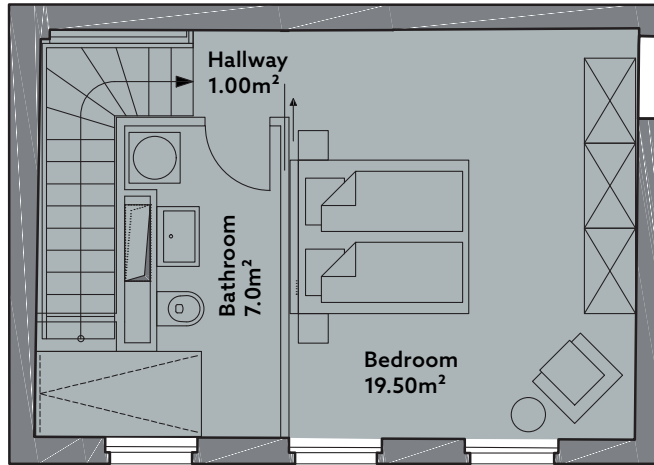


FLOOR PLANS

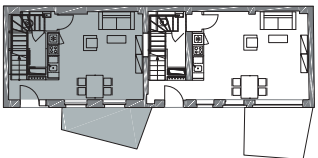
● 1-bedroom ● 2-bedroom

Yves-09

Ground floor duplex, 1-bedroom



1/F



G/F

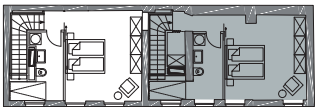
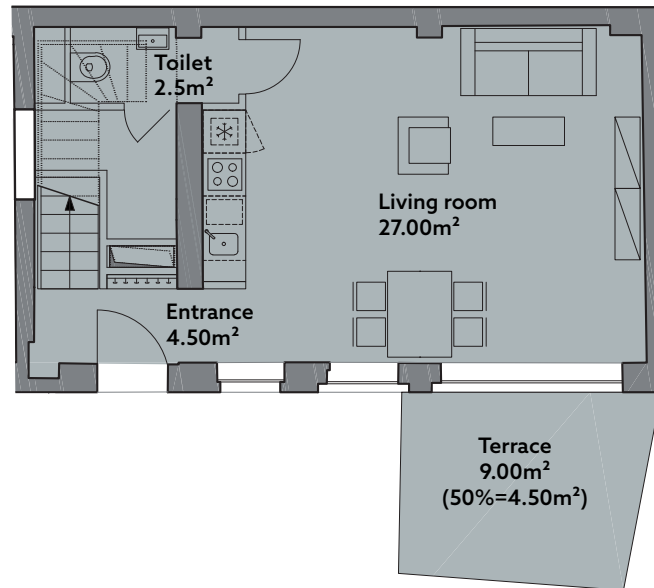
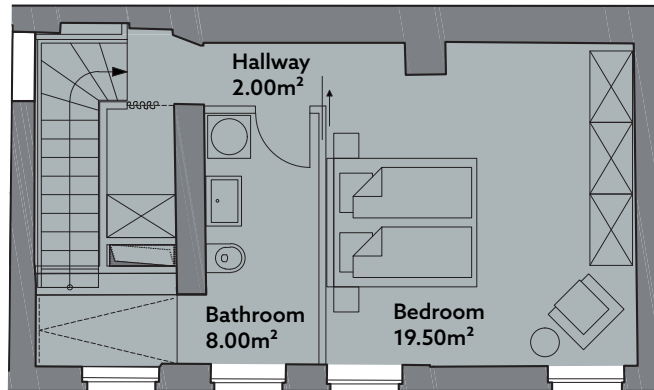
Internal Area:	56.5m ²
External Area:	3.5m ²
Total Area:	60m ²

FLOOR PLANS

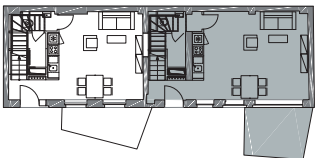
● 1-bedroom ● 2-bedroom

Yves-10

Ground floor duplex, 1-bedroom



1/F



G/F

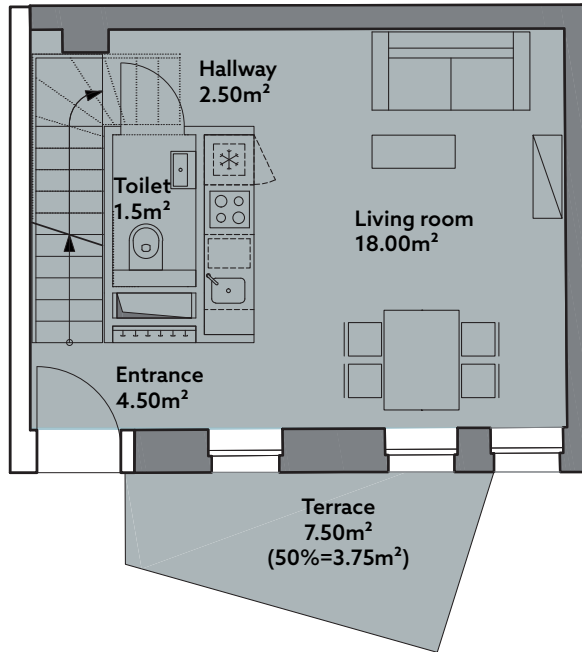
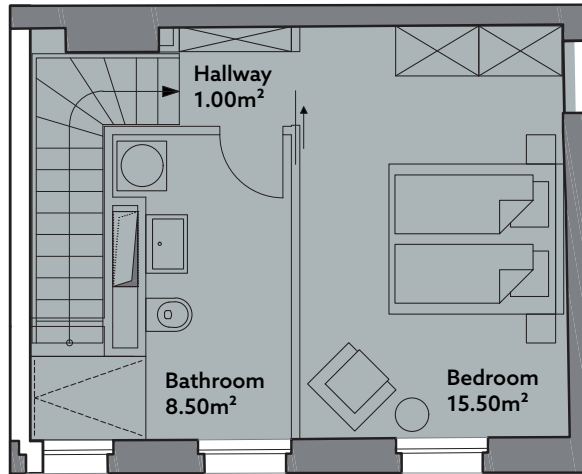
Internal Area:	67m ²
External Area:	4.5m ²
Total Area:	71.5m²

FLOOR PLANS

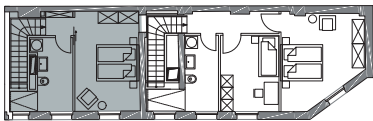
● 1-bedroom ● 2-bedroom

Yves-11

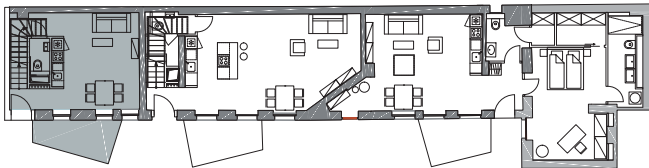
Ground floor duplex, 1-bedroom



1/F



G/F



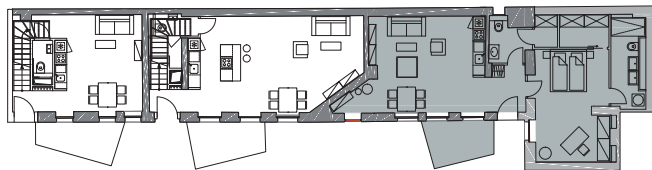
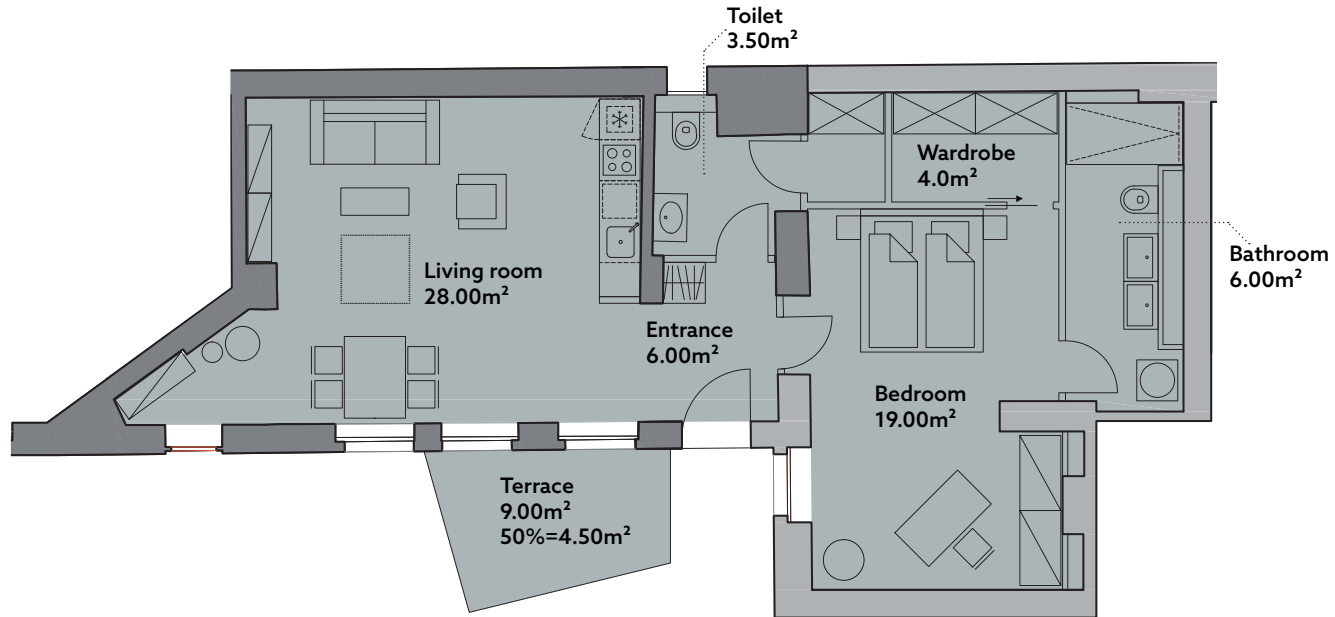
Internal Area:	51.5m ²
External Area:	3.75m ²
Total Area:	55.25m²

FLOOR PLANS

● 1-bedroom ● 2-bedroom

Yves-12

Ground floor, 1-bedroom



G/F

Internal Area:	68.5m ²
External Area:	4.5m ²
Total Area:	73m ²